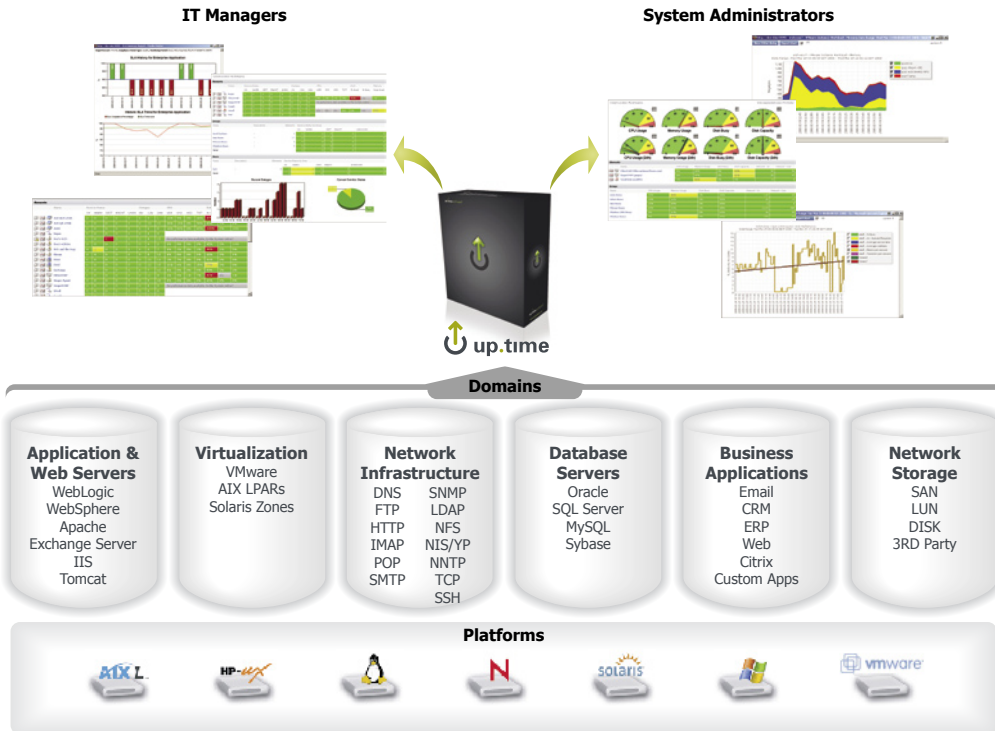
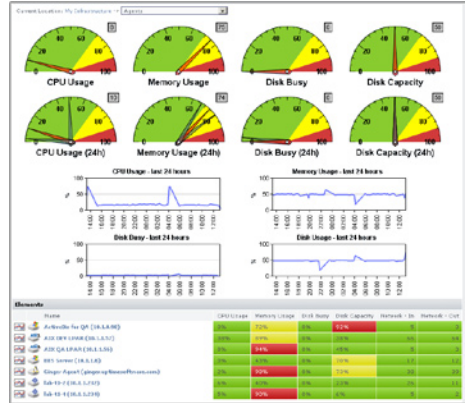


up.time: Deep, Complete and Affordable IT Systems Management



Enterprise-Wide IT Dashboards



Monitor and manage all servers, applications and services from a single dashboard:

- Deeply monitor and report on performance, availability and capacity across virtual, physical, and cloud assets and resources
- Easily see application health
- Enterprise-level resource views
- Enterprise-wide CPU, memory, and disk performance charts
- up.time reporting and management is easily accessed through its browser interface

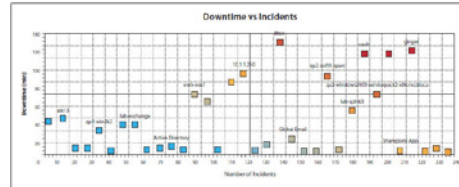
Multi-Datacenter Management



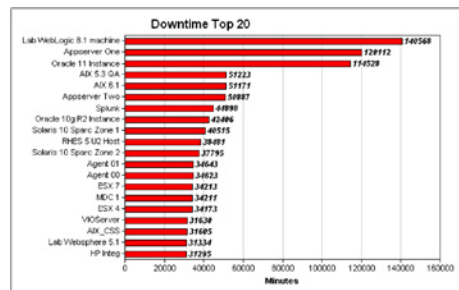
Monitor and report on thousands of physical, virtual and cloud servers, devices, and applications across multiple datacenters. Create role-based, cross-regional dashboards and reports to optimize IT resources:

- Access multiple datacenters from a central Enterprise Monitoring Station for remote infrastructure administration
- Seamless and secure aggregation of datacenter metrics to the central Enterprise Monitoring Station
- Datacenter health monitoring, and automatic resynchronization after outages ensures accurate and continuous data transfer
- Manage autonomously across all datacenters
- Logically group distributed application assets for true global SLA and application management
- Optimize global infrastructure capacity and resource allocation
- User and role management via Active Directory

Incident and Outage Avoidance

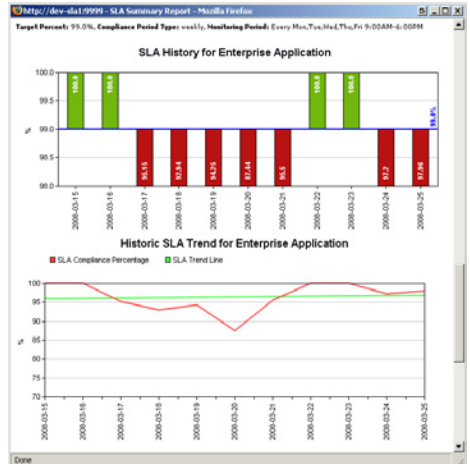


Quickly identify troubling infrastructure or applications by plotting incidents versus outages.



Easily report on top 20 systems or applications by downtime or incidents, enabling you to quickly prioritize incident response.

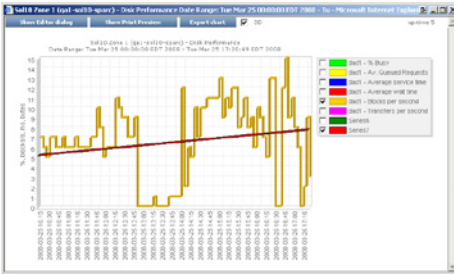
SLA Management



Use complete SLA monitoring and reporting to define and track IT performance:

- Quickly set and deploy SLAs
- Turn IT infrastructure demands into quantifiable goals
- Be alerted if an SLA is trending to miss its target, before it's too late
- Measure end-user experiences with Email delivery and Web application transaction monitors
- Generate SLA reports that show compliance success and objective breakdowns

## Capacity Planning



Use historical performance, availability, and trending reports, as well as performance graphs, to manage your IT infrastructure through resource planning and consolidation:

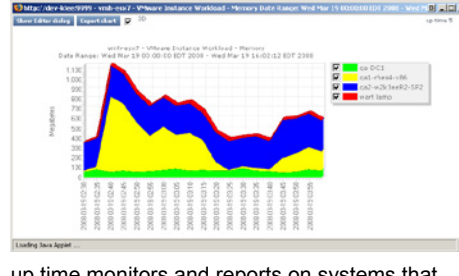
### Capacity Planning and Trending Reports:

- CPU Run Queue Threshold
- Disk I/O
- Enterprise CPU Utilization
- File System Capacity Growth
- File System Service Time Summary
- Network Bandwidth
- Server Virtualization
- Solaris Mutex Exception

### Performance graphs include the following:

- CPU & Multi-CPU Usage
- Free Memory
- Cache Hit Rate
- Paging Statistics
- Page File Use

## VMware & Virtual Monitoring



up.time monitors and reports on systems that are consolidated on virtual machines running on VMware ESX Server and AIX LPARs:

- Deploys in seconds with auto-discovery of the entire VMware environment
- Auto-monitoring applies monitoring and alerting to all VMs, the second they spin up
- Automatic checks of new VMs to ensure they are set up correctly (resource allocation, license validation, etc.)
- Deep monitoring and fast reporting of 100s of metrics across VMs, hosts, clusters, resource pools, vCenter Servers, and more
- Easy to understand capacity reports across multiple vCenter Servers for a true, global resource picture
- VMware capacity planning so you never run out of capacity again
- Server Virtualization reports that pinpoint servers ripe for virtualization
- VM density and capacity reporting
- Analyze VM movement and monitor VM workloads across VM farms

## Server & Application Monitoring



up.time collects a wide variety of performance and system health metrics from various database management and application servers:

### Database Server Monitors

- Microsoft SQL Server
- MySQL
- Oracle Database
- Sybase ASE

### Application Server Monitors

- BEA WebLogic
- IIS
- Microsoft Exchange Server
- VMware ESX Server
- WebSphere

up.time also collects a variety of run-time metrics for BEA WebLogic and WebSphere applications including JVM, connection pool, EJB, and servlet statistics.

## Supported Database, Monitoring Station and Agent Platforms

up.time can use the following databases as its DataStore:

- MySQL (included with up.time)
- Oracle
- Microsoft SQL Server

The up.time Monitoring Station can run on the following platforms:

### Linux

- Red Hat Enterprise Linux
- SUSE Linux Enterprise Server

### UNIX

- Solaris

### VMware

- CentOS (Virtual Application only)

### Windows

- Windows 7
- Windows Server 2008
- Windows Server 2003
- Windows Vista

up.time agents can report on the following platforms:

### Linux

- CentOS
- Debian GNU/Linux
- Fedora & Fedora Core
- Red Hat Enterprise Linux
- Red Hat Linux Professional
- SUSE Linux Enterprise Server & Desktop
- SUSE Linux Professional
- Ubuntu Server Edition

### UNIX

- AIX
- HP-UX
- IRIX
- Solaris
- Tru64 UNIX

### Windows

- Windows 7
- Windows Server 2008
- Windows Server 2003
- Windows XP

### VMware

up.time can monitor and report on the workload of instances running on a VMware ESX server. Supported versions include the following:

- ESX 3, 4, vSphere
- ESXi

## Learn More About up.time

Monitor your servers, applications, databases, IT resources, and investigate alerts. Using the information that up.time gathers, you can solve problems *before* they impact your business.

Visit [www.uptimesoftware.com](http://www.uptimesoftware.com) to learn more about how up.time helps you manage your IT infrastructure, and how others are benefitting from up.time:

- Download a free trial
- Live or on-demand webinars
- Case studies
- White papers

For more information, contact us by email at [sales@uptimesoftware.com](mailto:sales@uptimesoftware.com), or call us at +1-416-868-0152.

To download a free enterprise trial, visit [www.uptimesoftware.com](http://www.uptimesoftware.com) or click below:



up.time is also downloadable as an appliance.

