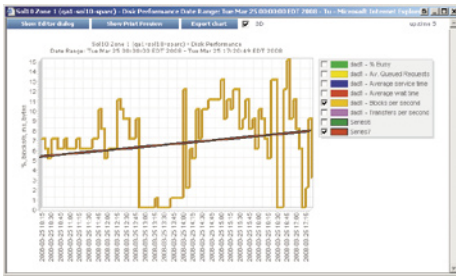


Capacity Planning



Use historical performance, availability, and trending reports, as well as performance graphs to manage your IT infrastructure through resource planning and consolidation:

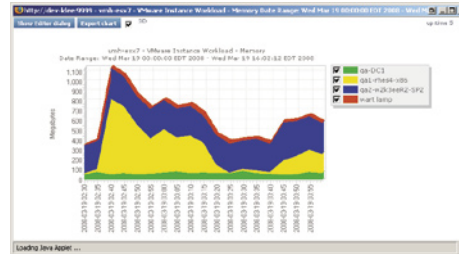
Capacity Planning and Trending Reports:

- CPU Run Queue Threshold
- Disk I/O
- Enterprise CPU Utilization
- File System Capacity Growth
- File System Service Time Summary
- Network Bandwidth
- Server Virtualization
- Solaris Mutex Exception

Performance graphs include the following:

- CPU & Multi-CPU Usage
- Free Memory
- Cache Hit Rate
- Paging Statistics
- Page File Use

Virtual & VMware Monitoring



up.time reports on systems that are consolidated on virtual machines running on VMware ESX Server and AIX LPARs:

- Server Virtualization report: easily pinpoint servers that are ripe for virtualizing
- VM density and capacity reporting
- analyze VM movement
- monitor VM workloads across VM farm
- VM reports include VMware Workload, VMware Infrastructure Density, and LPAR Workload
- Automate incident avoidance with VMware vCenter Orchestrator integration

In addition to collecting performance metrics from the ESX Server, performance metrics are also reported for each instance:

- CPU
 - Disk
 - Memory
 - Network
 - % Ready
 - % Used
 - Instance Motion
- Plus many more memory and disk performance metrics including:
- Memory Balloon Target
 - Memory Swap Used
 - Disk Commands Aborted
 - Disk Bus Resets

Server & Application Monitoring



up.time collects a wide variety of performance and system health metrics from various database management and application servers:

Database Server Monitors

- Microsoft SQL Server
- MySQL
- Oracle Database
- Sybase ASE

Application Server Monitors

- BEA WebLogic
- IIS
- Microsoft Exchange Server
- VMware ESX Server
- WebSphere

up.time also collects a variety of run-time metrics for BEA WebLogic and WebSphere applications including JVM, connection pool, EJB, and servlet statistics.

Supported Database, Monitoring Station and Agent Platforms

up.time can use the following databases as its DataStore:

- MySQL (included with up.time)
- Oracle
- Microsoft SQL Server

The up.time Monitoring Station can run on the following platforms:

Linux

- Red Hat Enterprise Linux
- SUSE Linux Enterprise Server

UNIX

- Solaris

VMware

- CentOS

Windows

- Windows 7
- Windows Server 2008
- Windows Server 2003
- Windows XP

up.time agents can report on the following platforms:

Linux

- CentOS
- Debian GNU/Linux
- Fedora & Fedora Core
- Red Hat Enterprise Linux
- Red Hat Linux Professional
- SUSE Linux Enterprise Server & Desktop
- SUSE Linux Professional
- Ubuntu Server Edition

UNIX

- AIX
- HP-UX
- IRIX
- Solaris
- Tru64 UNIX

Windows

- Windows 7
- Windows Server 2008
- Windows Server 2003
- Windows XP

VMware

up.time can monitor and report on the workload of instances running on a VMware ESX server. Supported versions include the following:

- ESX 3, 4, vSphere
- ESXi

Learn More About up.time

Monitor your servers, applications, databases, IT resources, and investigate alerts. Using the information that up.time gathers, you can solve problems *before* they impact your business.

Visit www.uptimesoftware.com to learn more about how up.time helps you manage your IT infrastructure, and how others are benefitting from up.time:

- see up.time in action (product tour)
- white papers
- case studies

For more information, contact us by email at sales@uptimesoftware.com, or call us at +1-416-868-0152.

To download a free enterprise trial, visit www.uptimesoftware.com or click below:



up.time is also downloadable as an appliance.

