



Installation Guide

This guide will walk through each step of installation for up.time software on a Windows server. Uptime is licensed based on the number of “elements” which you plan to monitor. Hardware allocation should also be planned based on the number of elements which the administrator determines will be monitored.

What is an up.time monitored element?

An “Element” is any server, workstation, network device, or system which is bound to a fully qualified domain name, host name, or IP address. For example, if an administrator has a Server which has Exchange server and IIS server installed on it and they would like to monitor:

- Exchange Server
- IIS Server
- Operating System

They are able to accomplish this by monitoring a single element. All of these services exist on the same server with a single IP address (in this example) and so all of them are bound to the same IP address. That IP address is considered 1 element or 1 license within Uptime.

Based on this example, we can begin planning both the requirements for licensing and the hardware.

Hardware Requirements:

It is important to understand the hardware requirements when planning the implementation. The hardware requirements depend on the number of elements to be monitored.

Running up.time software on either a physical or virtual server is fine.

The amount of allocated resources depends on the size of the environment and the number of elements to be monitored. As a general rule of thumb, you should plan on allocating about 4 GB of disk space per every monitored element.

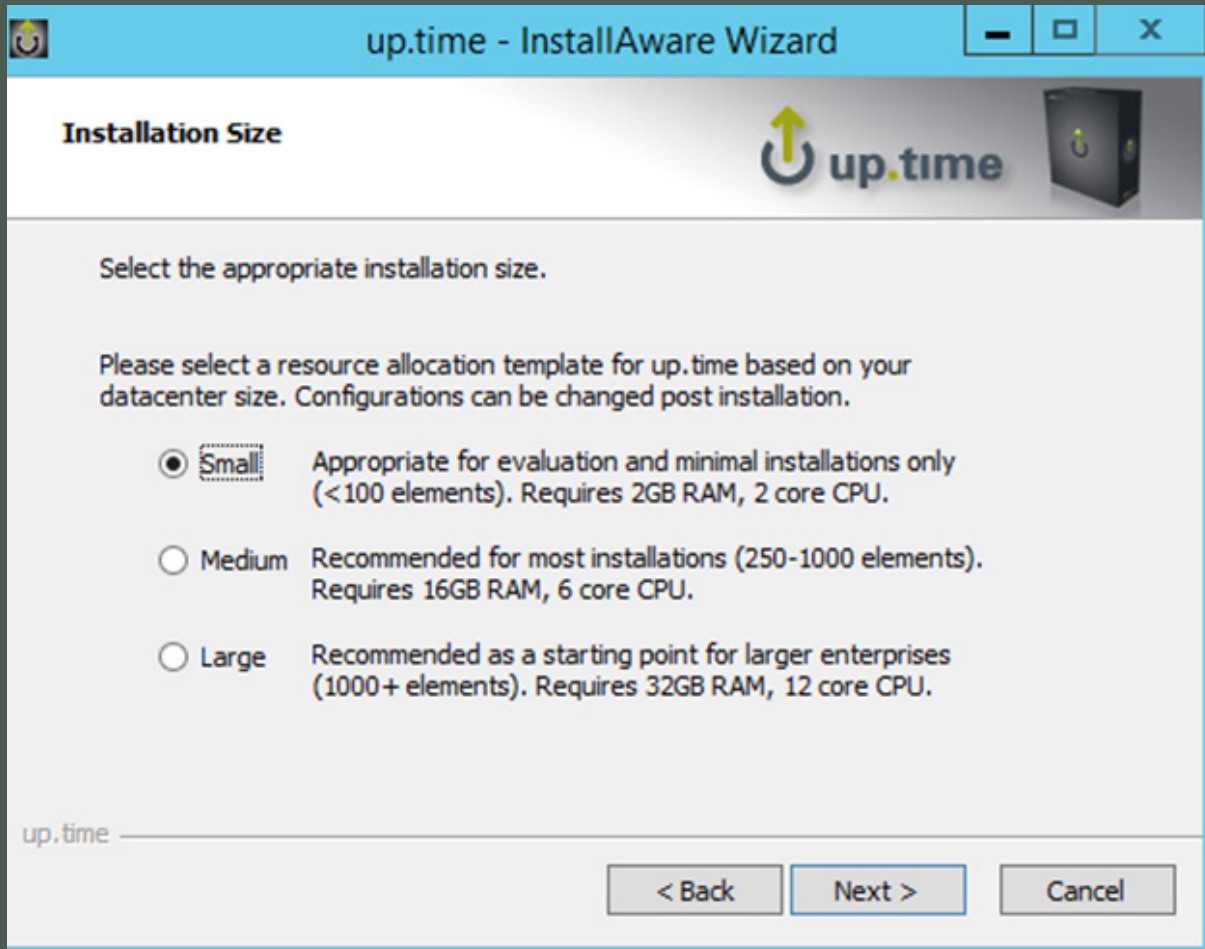
[Here's a link to some to up.time documentation for more detailed information](#)

Example up.time core architecture configuration

The following is a possible hardware recommendation for a deployment that is monitoring up to 50 systems:

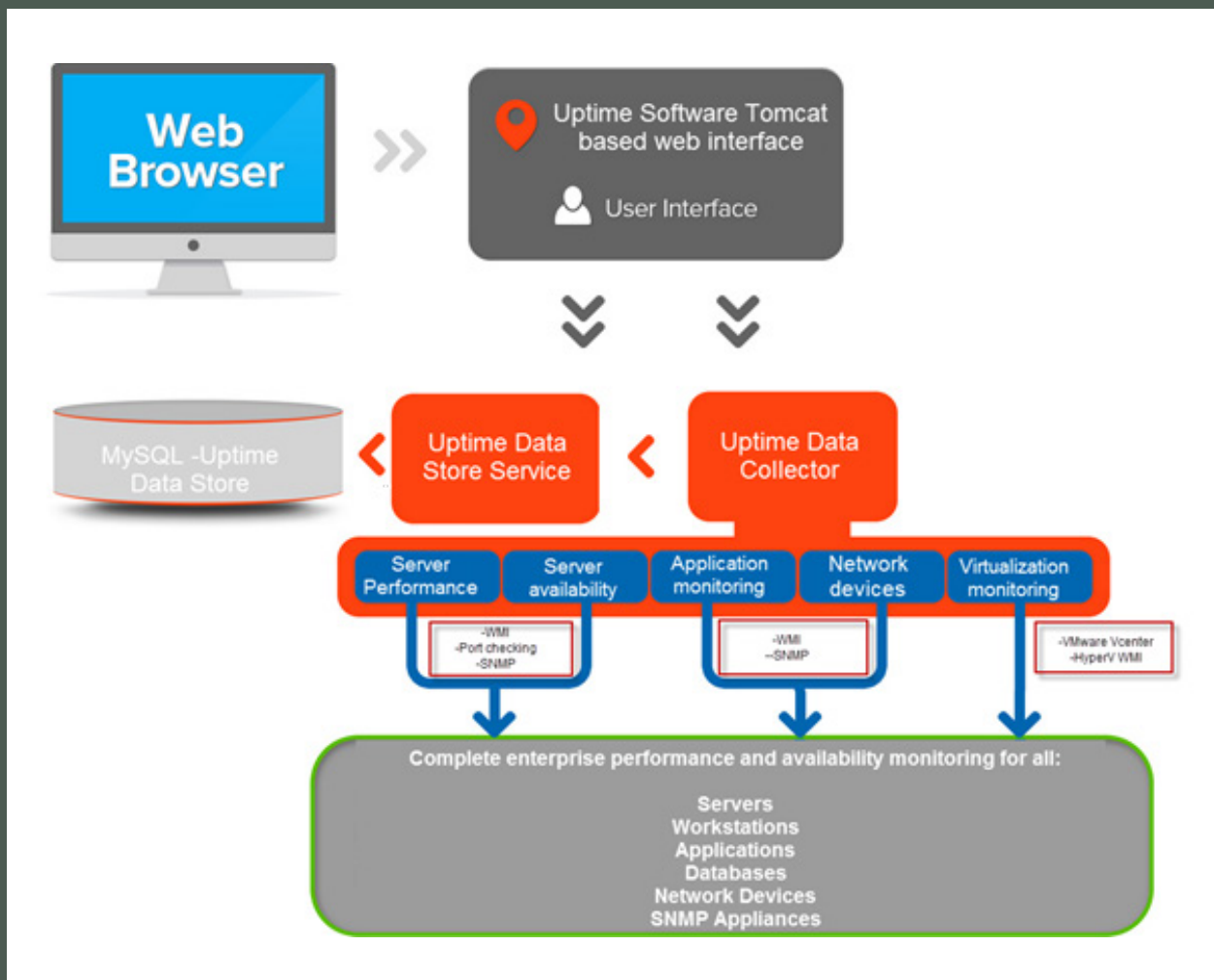
- 64-bit 2.4 GHz quad-core processor
- 4 GB of memory
- 200 GB of disk storage
- 1000 Mbit/s network interface

During the installation, the up.time installation wizard will help with determining the amount of resources necessary dependent on the administrator's plans for future growth. Below is an example of the different size considerations which are offered during the installation.








Uptime Software Architecture

Uptime has been designed to be scalable; capable of monitoring thousands of elements with a very simple architecture. Most monitoring does not require an agent to be installed on the monitored system. However, an agent installation is available for systems which require scripted actions to run directly on the system when an alert condition is raised.



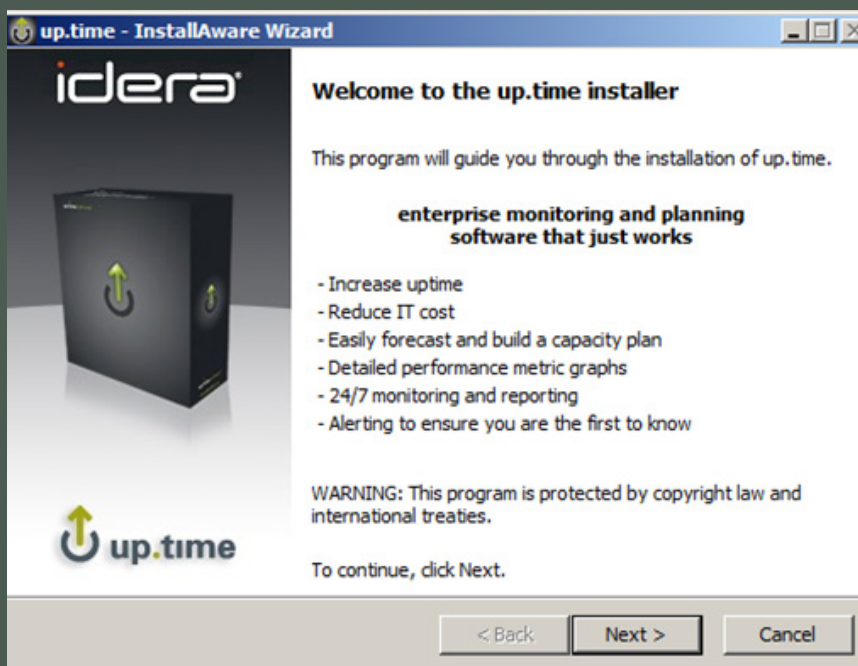
Uptime Services

 up.time agent	Started	Automatic	Local System
 up.time Controller	Started	Automatic	Local System
 up.time Data Collector	Started	Automatic	sedomain\...
 up.time Data Store	Started	Automatic	Local System
 up.time Web Server	Started	Automatic	Local System

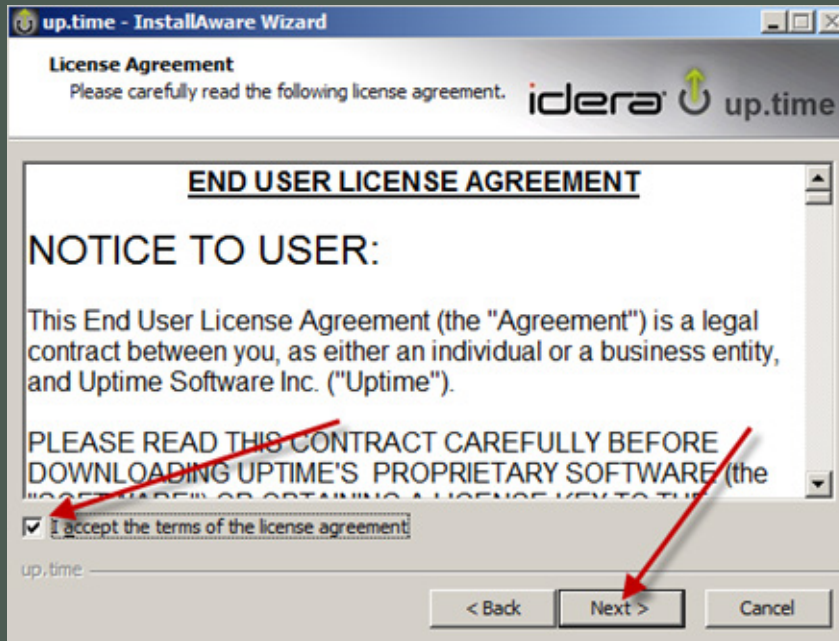
Installation Walkthrough

Note: If you are trialing the software in a test and temporary proof of concept, do not install up.time software directly on a domain controller.

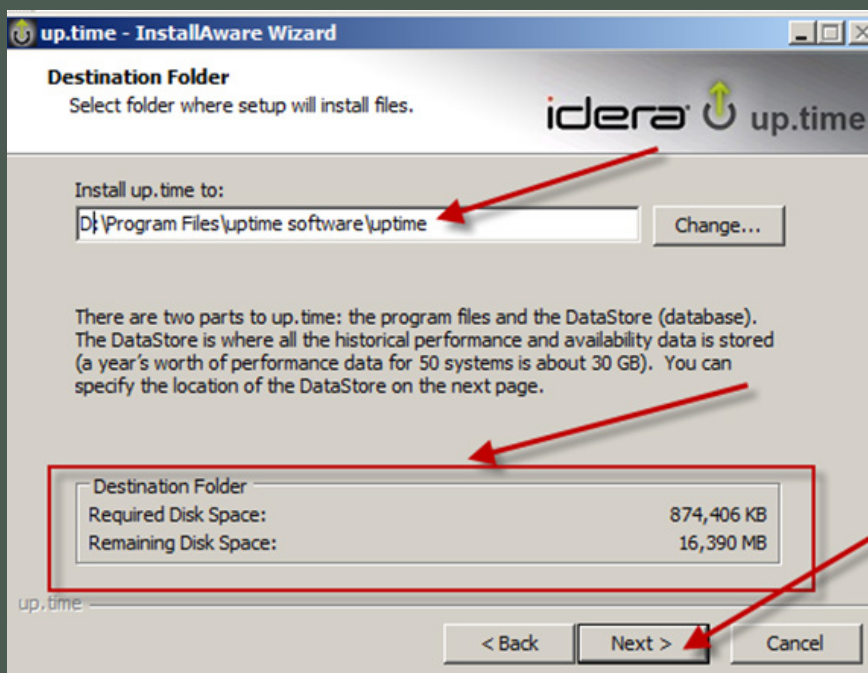
1. Uptime install wizard introduces the software with a welcome screen.



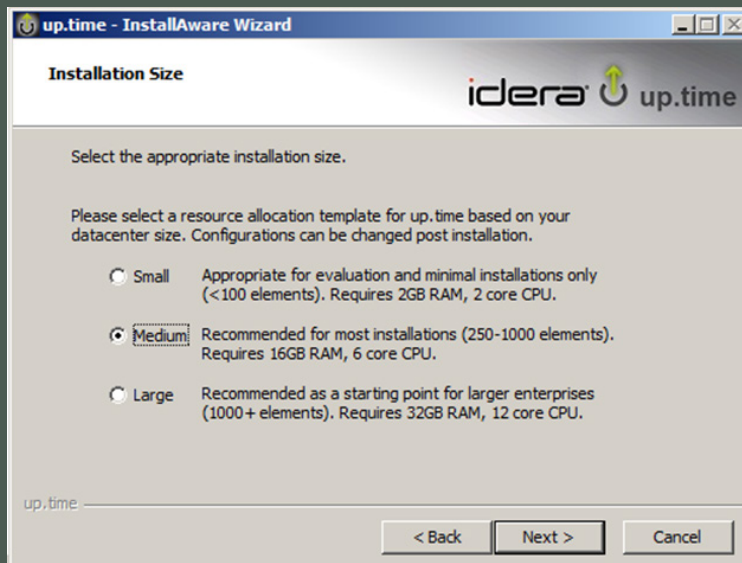
2. The next screen includes the “License agreement”. Please review and accept the license agreement and select “Next”.



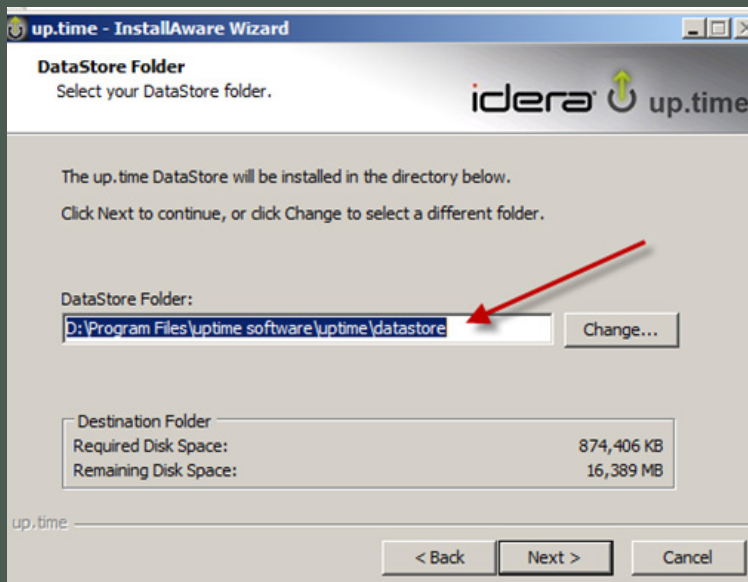
3. On the next screen, select the appropriate installation drive and folder location. Take note of the disk space requirements, to ensure that this location is suitable. After making the necessary adjustments, select “Next”.



4. Next select the appropriate environment size based on the previous planning estimates.

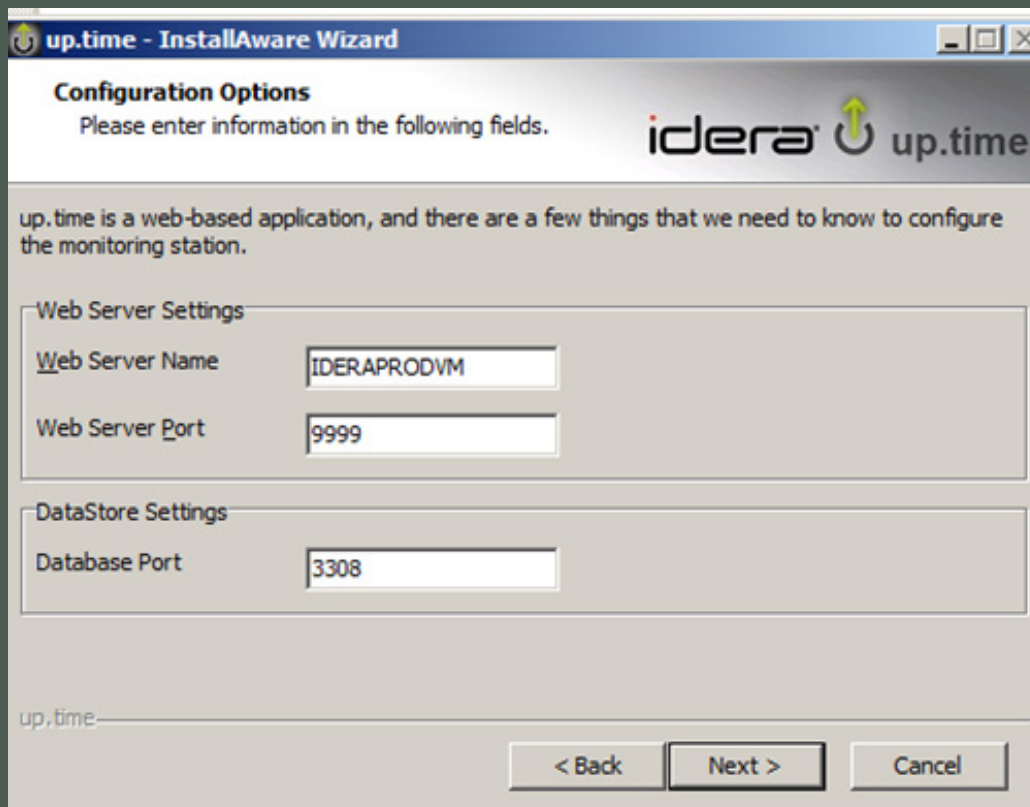


5. Next, configure the location of the data store. The data store by default is running a “MySQL” database configuration. This is where the collected performance and up.time data will be stored. Be sure to place the data store folder in a location which will provide the appropriate sufficient disk space.



6. The up.time management interface runs on a Tomcat web interface. The next screen in the install process provides options for configuring the Web Server name, Web service listening port, and Database listening port.

Note: Consult with your network team to ensure that these ports will be accessible to the up.time administrators or configure the appropriate custom ports as defined by the network team.

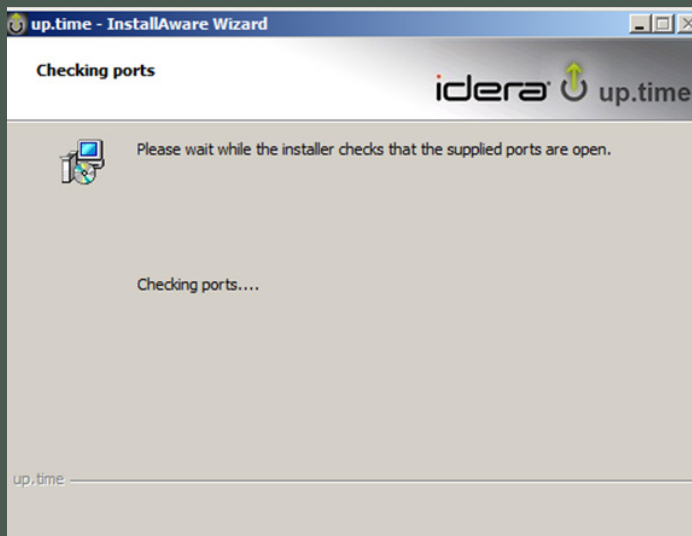


The screenshot shows a Windows-style window titled "up.time - InstallAware Wizard". The main heading is "Configuration Options" with the instruction "Please enter information in the following fields." The Idera up.time logo is in the top right. A paragraph explains that up.time is a web-based application and lists configuration requirements. The form is divided into two sections: "Web Server Settings" and "DataStore Settings".

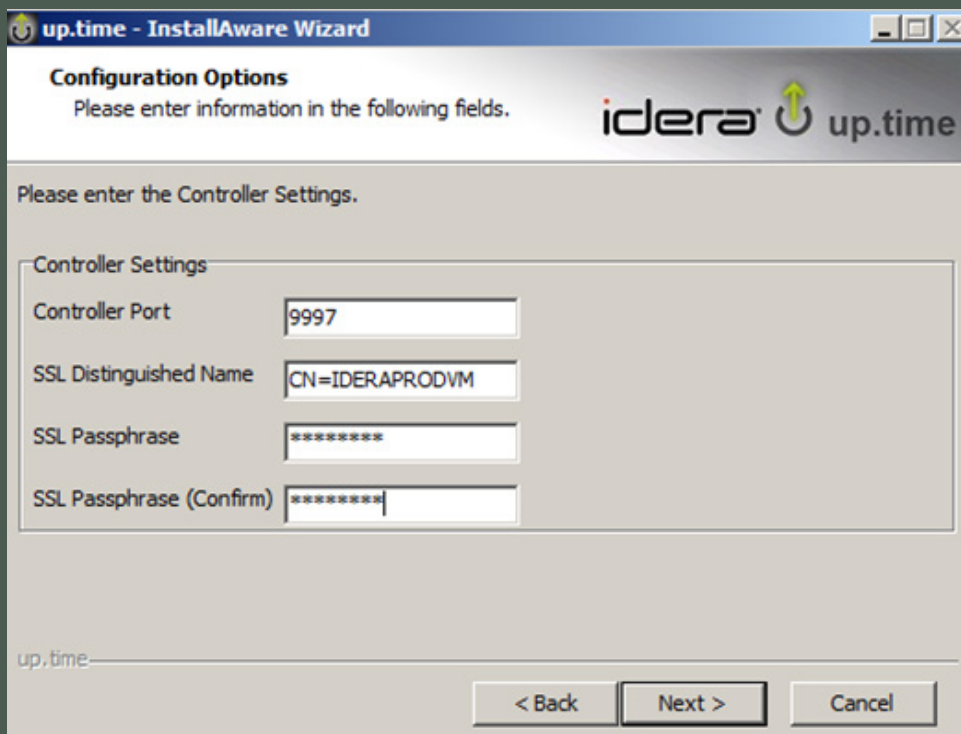
Section	Field	Value
Web Server Settings	Web Server Name	IDERAPRODVM
	Web Server Port	9999
DataStore Settings	Database Port	3308

At the bottom, there are three buttons: "< Back", "Next >", and "Cancel".

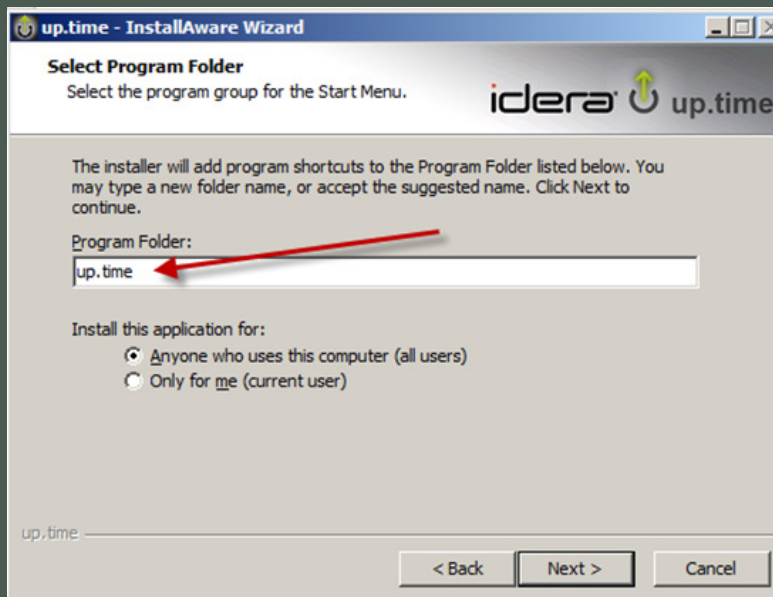
7. The up.time install wizard will validate the ports to ensure that they are not already in use.



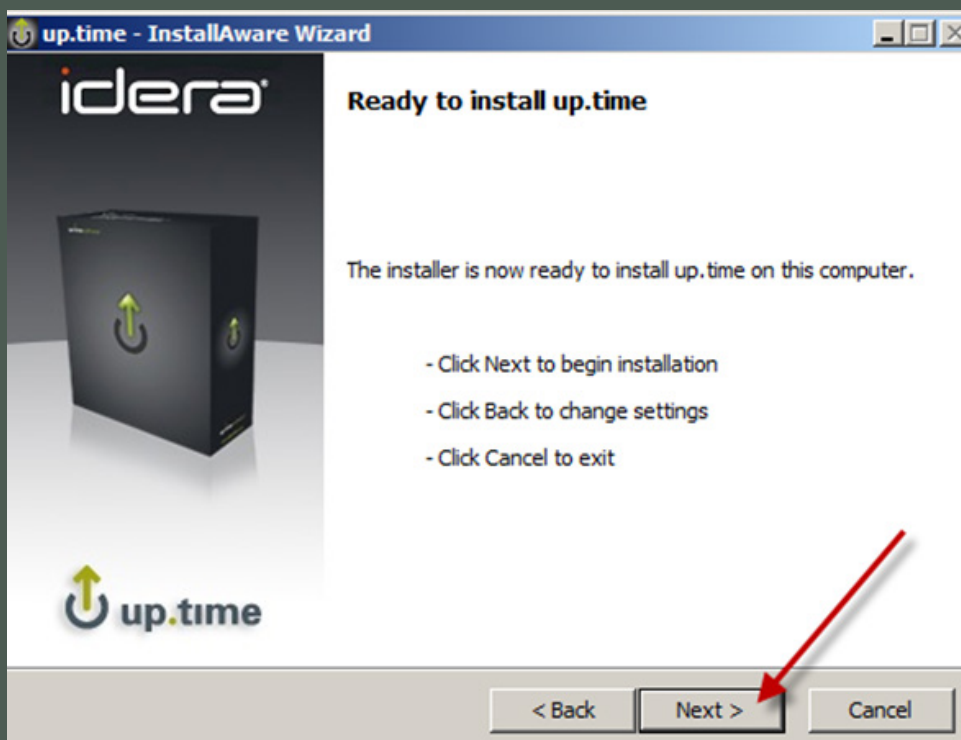
8. The up.time management web interface communication can be secured using SSL. The next install screen allows the installer/administrator to create the SSL configuration. Supply a password which you will remember.



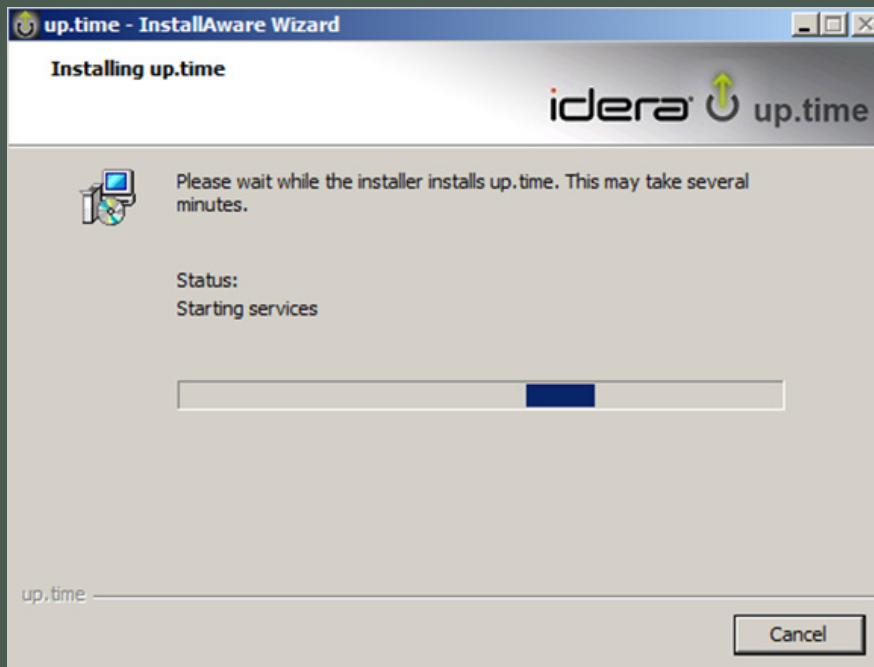
9. Supply a friendly name for the up.time software program group, or simply select Next to choose the default name.



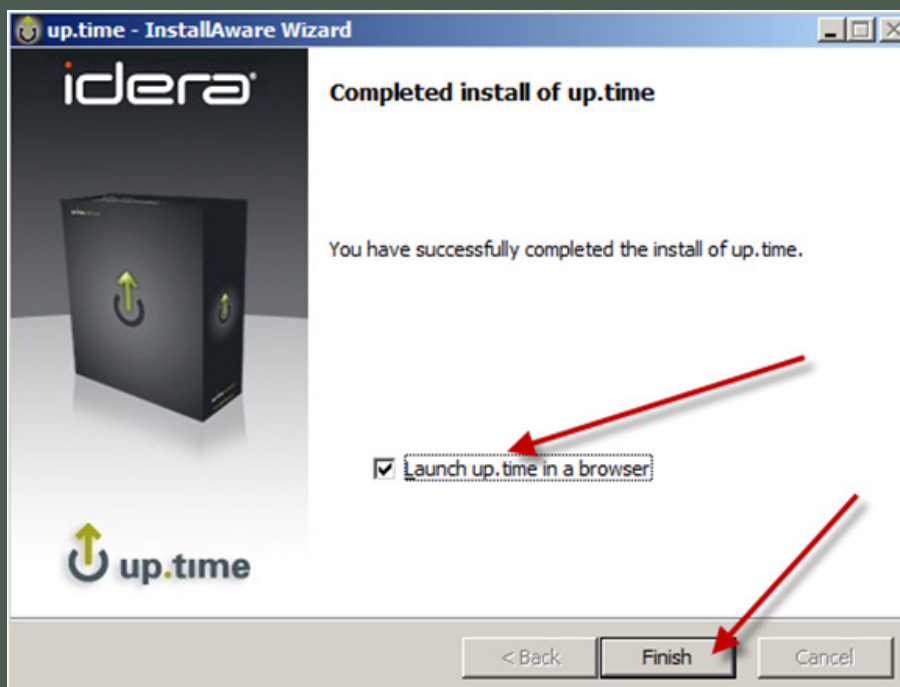
10. On the next screen, the wizard is ready to install. Select Next if the configured options are all suitable to the planned configuration.



11. The up.time software installation begins. It may take a few minutes to install.

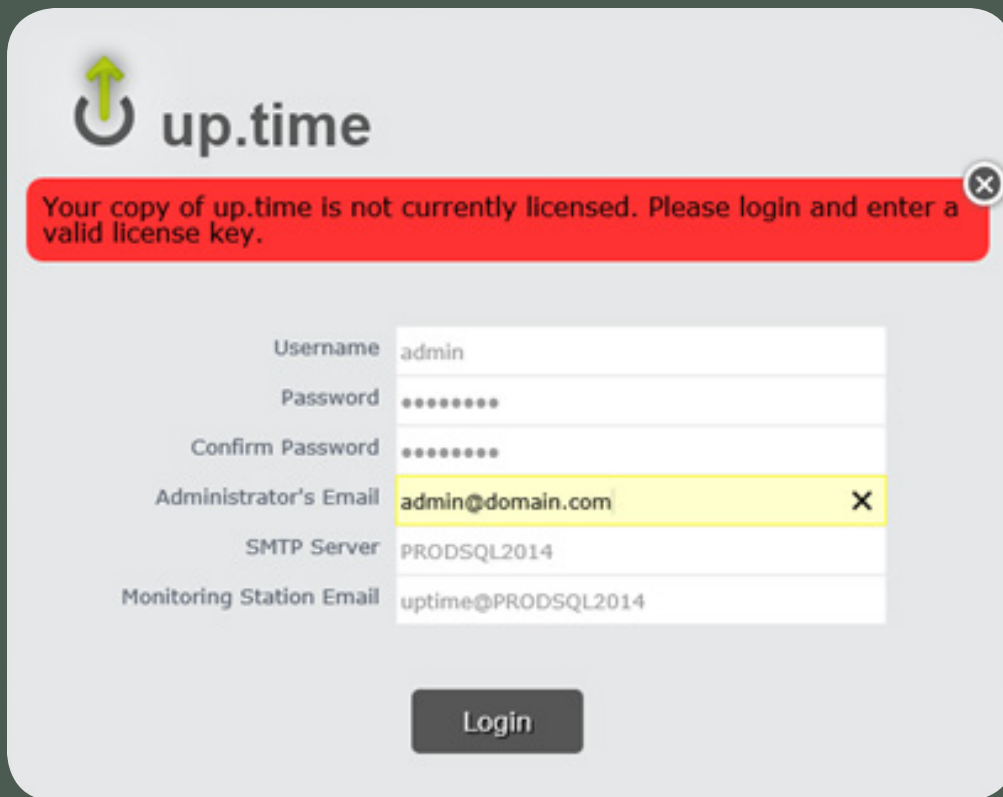



12. The final “completion” screen is displayed. Select the option to “Launch up.time in a browser” and select “Finish”.



Launching of the Console

1. After launching the console, you will be prompted to enter a password for your administrator account. You will also be provided with an option to enter the SMTP configuration for administrative alerting. Carefully supply the password, and remember this password for future reference:



 **up.time**

Your copy of up.time is not currently licensed. Please login and enter a valid license key. ✕

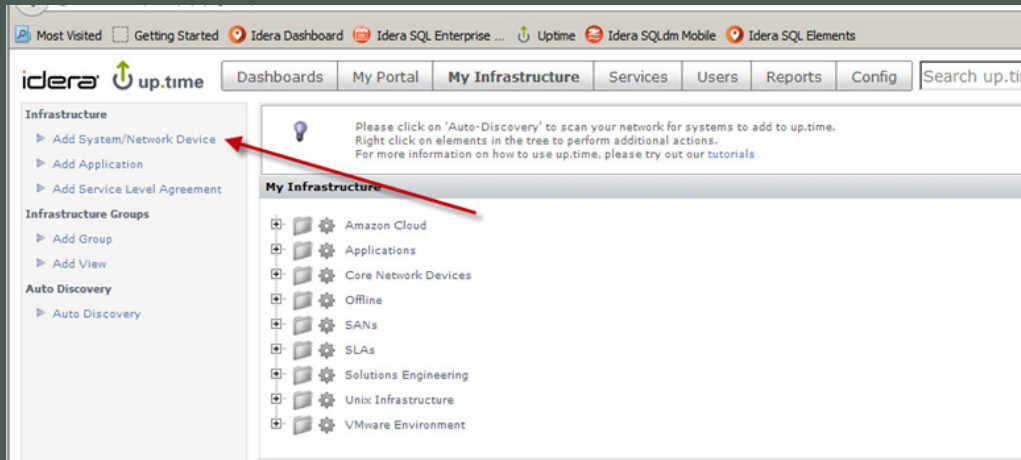
Username	admin
Password	••••••••
Confirm Password	••••••••
Administrator's Email	admin@domain.com ✕
SMTP Server	PRODSQL2014
Monitoring Station Email	uptime@PRODSQL2014

Login

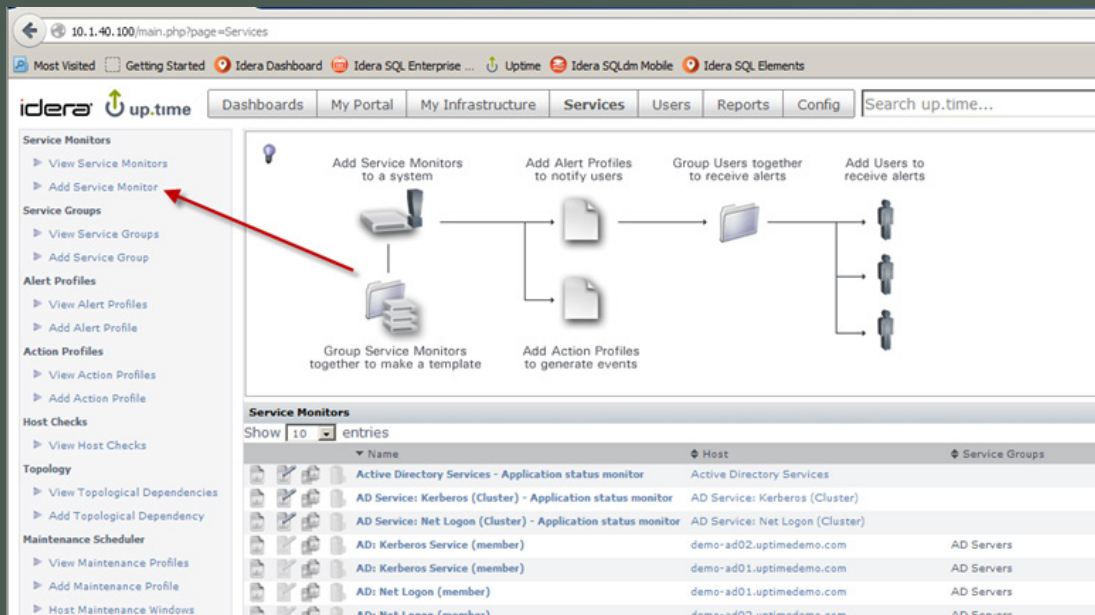
2. Next, up.time will take you to the license screen to supply a trial license key. You should have received a key in the confirmation email received after downloading the trial. You may also obtain a trial key from your account manager. Production license keys are cut based on a unique machine name. This machine ID is located at the bottom of the license screen.

The screenshot shows the up.time configuration interface. At the top, a red banner displays the warning: "Warning: up.time is not licensed". The left sidebar contains a "Config" menu with options like "License Info", "User Authentication", "Archive Policy", "Mail Servers", "Remote Reporting", "Problem Reporting", "Global Element Settings", "Bulk Element Conversion", "VMware VCenter Orchestrator", and "up.time Configuration". The main content area is divided into sections: "up.time Information" (showing "Available Updates" and "License Status" as "No license added."), "License Notifications" (with a dropdown menu for "NotifySysAdmins"), and "License Information" (containing instructions on how to obtain a license key and a "Request License" button). A red arrow points to the "License key:" input field. At the bottom, a red box highlights the machine ID: "The FLEXnet host ID of this machine is '000c29620b8a'".

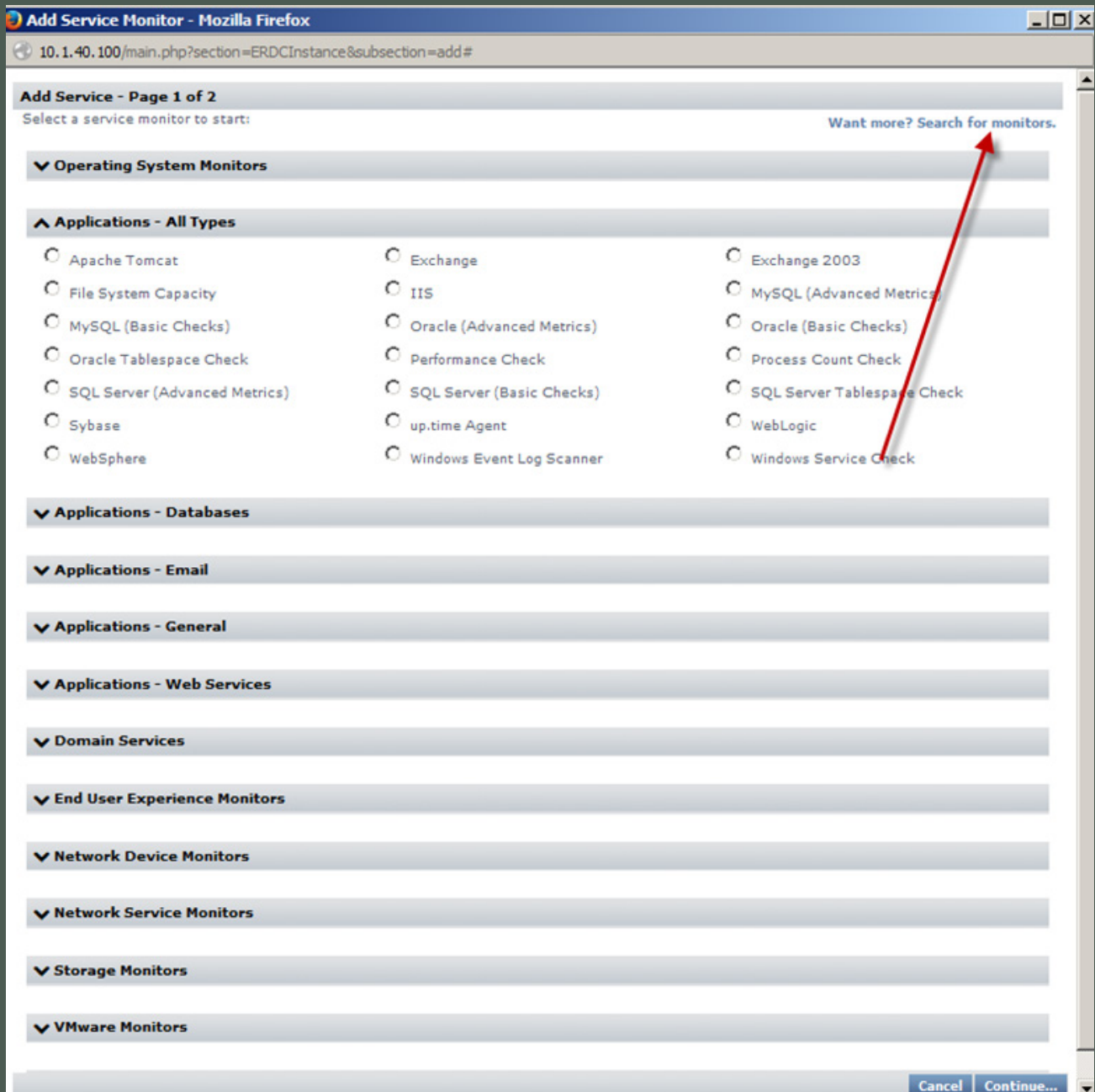
3. After the product is licensed, you may begin using the up.time trial software. Under the “My Infrastructure” tab, you will find the option to add “systems and network devices”. Select this option to begin monitoring the “elements”.



4. After the Elements have been added for monitoring, select the “Services” tab and select the option to “Add Service” to monitor specific applications and services on the selected elements.



5. Out of the box, up.time software offers many different types of application and systems monitoring to choose from and many more additional options can be downloaded.



Note: Consult the Quick Start Guide to help continue configuring your environment to monitor.